

pro advise

Reporting via BI Publisher



Berglen, 26.02.2014

Inhalt

S. Thema

4. Report 1 (Project Phase)
5. Report 2 (Resource Type)
6. Report 3 (Headcount)
7. Report 4 (Project Type)
8. Report 6 (Headcount Unstaffed)
9. Report 7 (Headcount Target)
10. Report 8 (Headcount Target)
11. Staffed vs. Unstaffed Assignments
12. Pivoted Actual Units per Project
13. Project WBS Overview



Inhalt 2

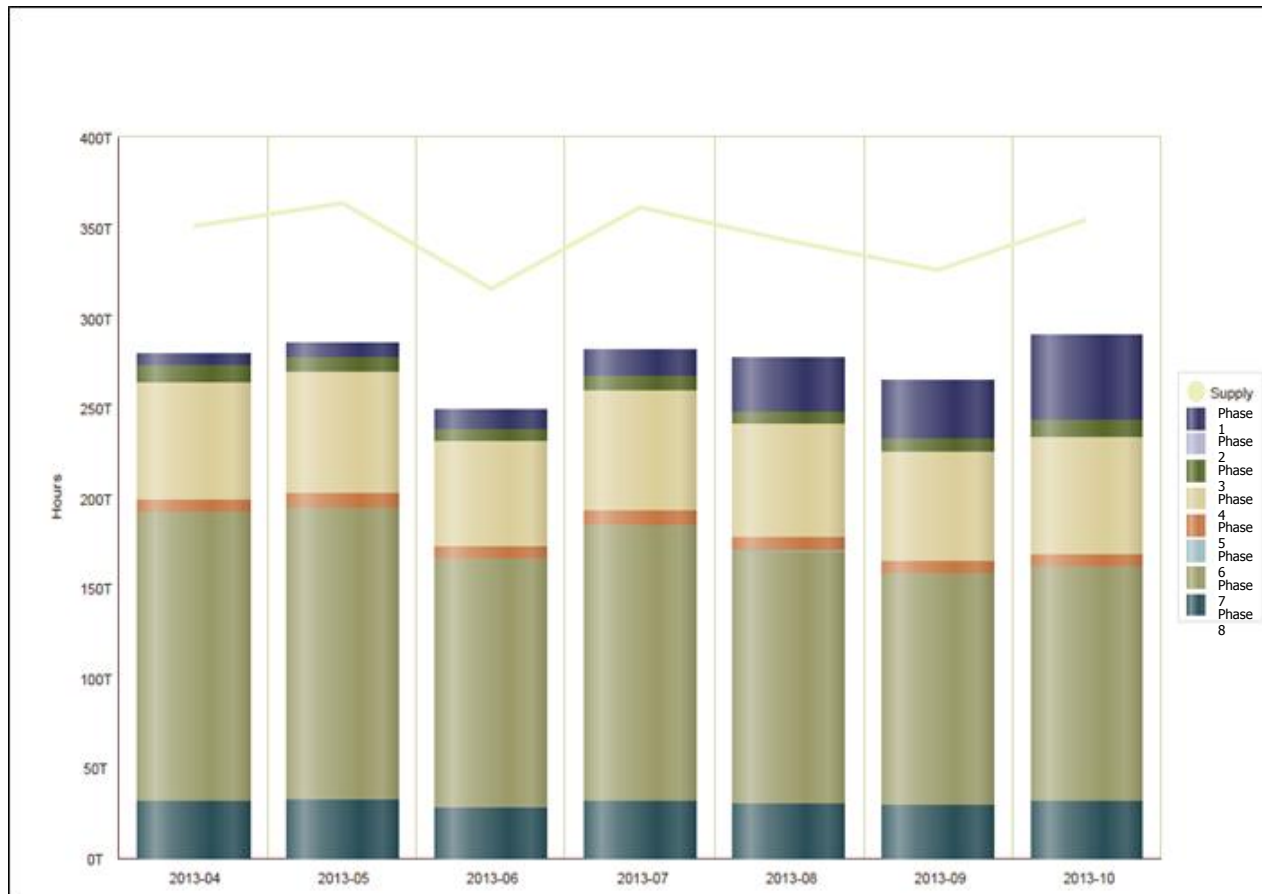
S. Thema

- | | |
|------------|--|
| 14. | Project Status Report - 1 |
| 15. | Project Status Report - 2 |
| 16. | S-Curves |
| 17. | Weekly Schedule Performance - 1 |
| 18. | Weekly Schedule Performance - 2 |
| 19. | Project Earned Value |
| 20 | Investment Alignment |
| 21 | Kontakt |



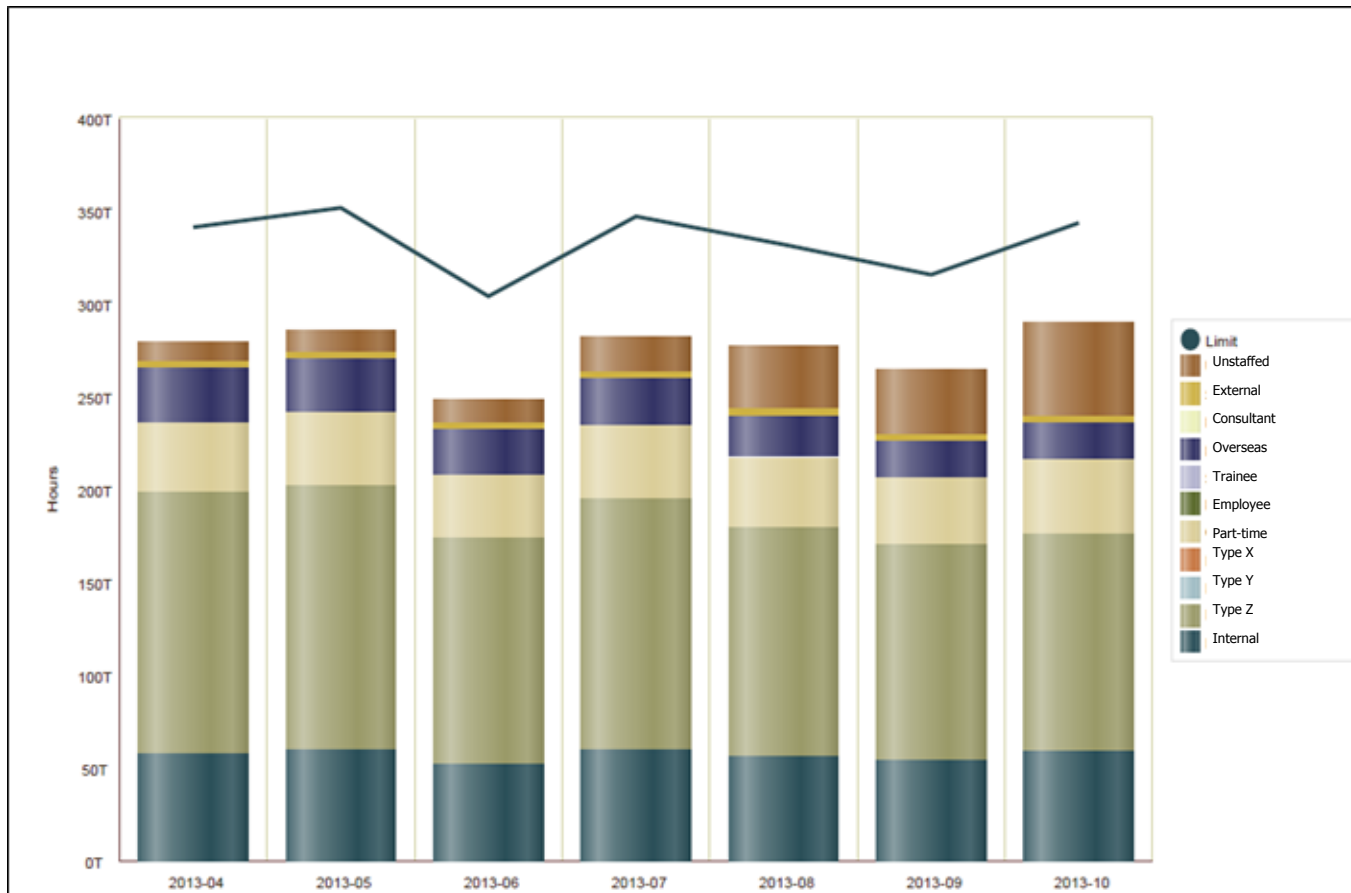
Report 1 (Project Phase)

- Purpose: to show the gap between available resources (=Supply) and planned roles (=Demand) grouped by project phase



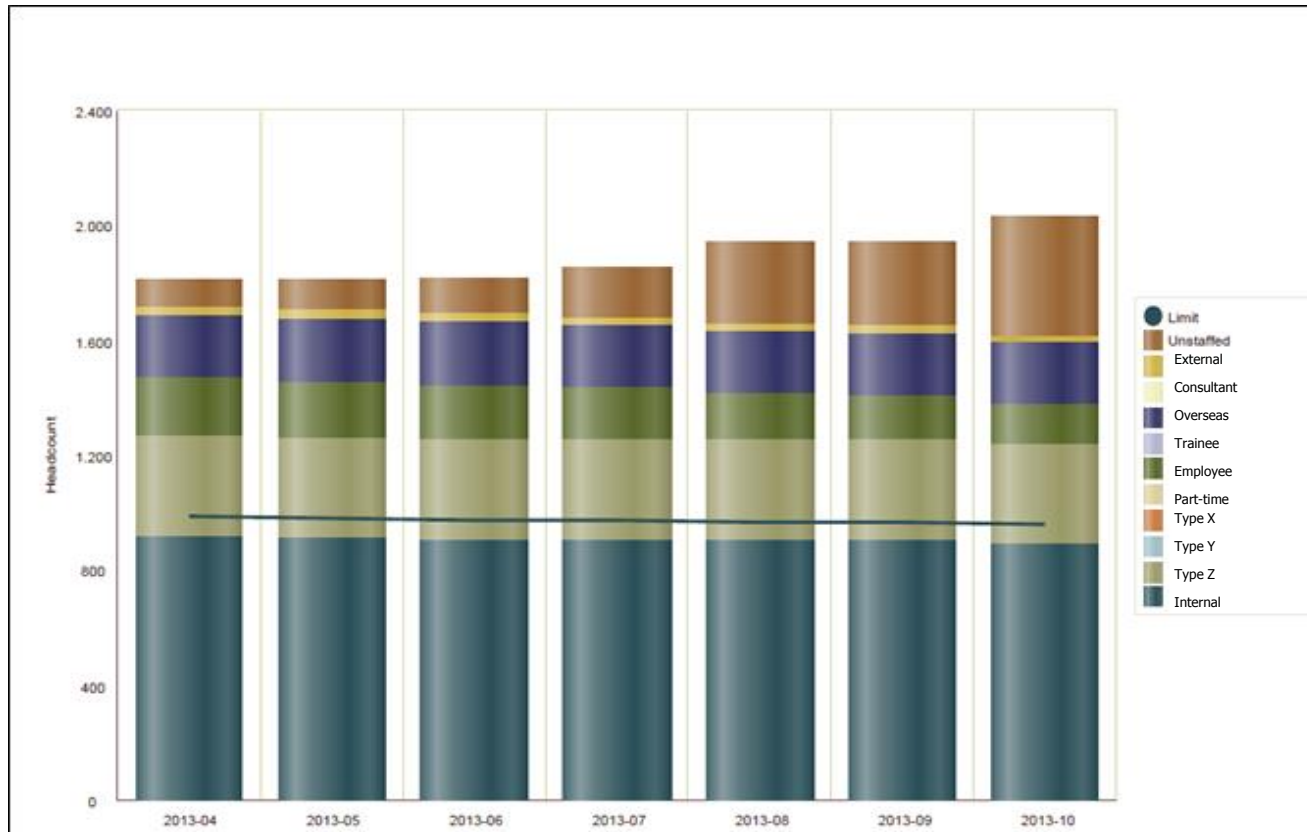
Report 2 (Resource Type)

- Purpose: to show the gap between available resources (=Supply) and planned roles (=Demand) grouped by type of resource



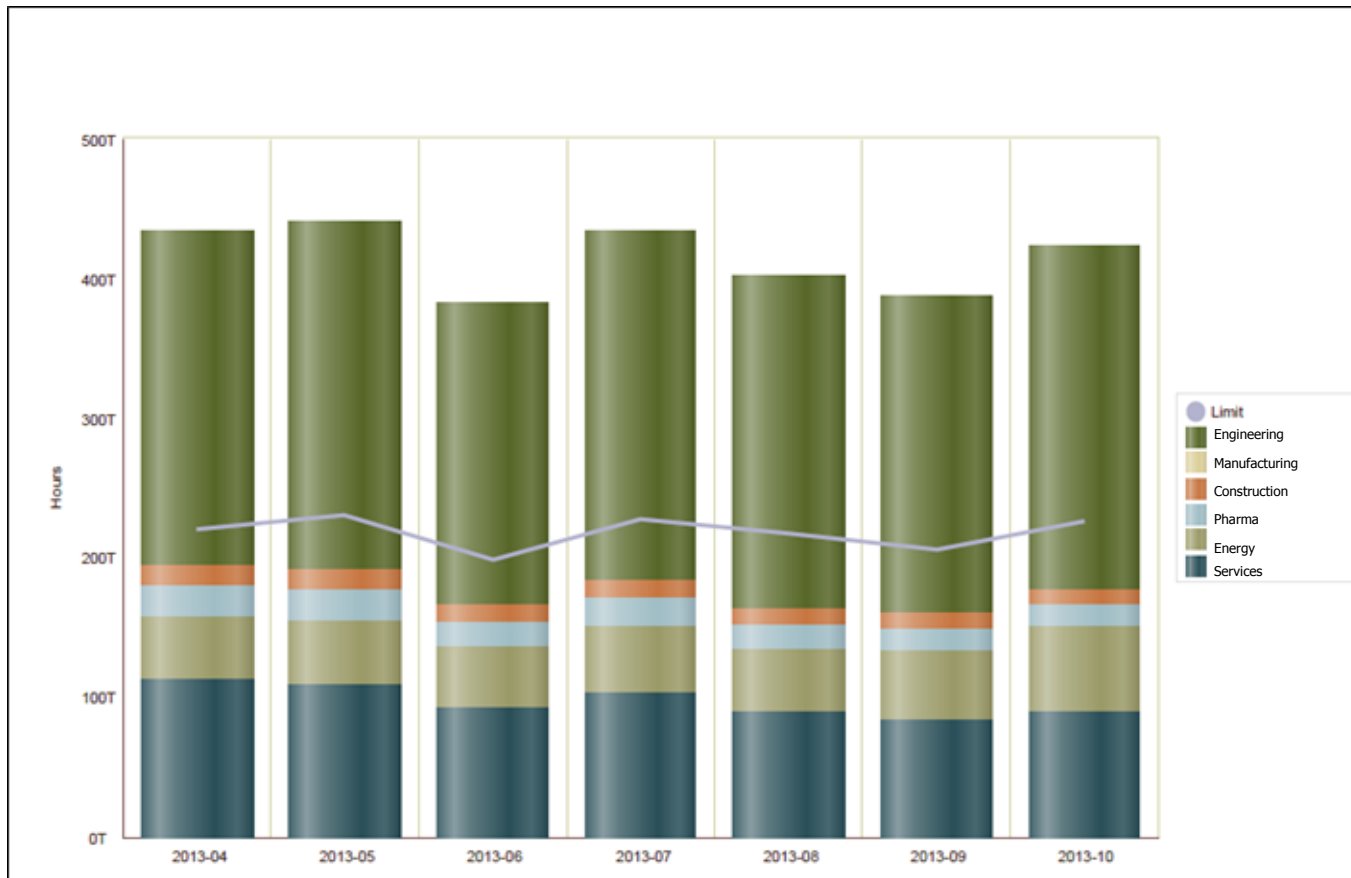
Report 3 (Headcount)

- Purpose: to show the gap between the headcount of available resources (=Supply) and the headcount of planned roles (=Demand) grouped by type of resource



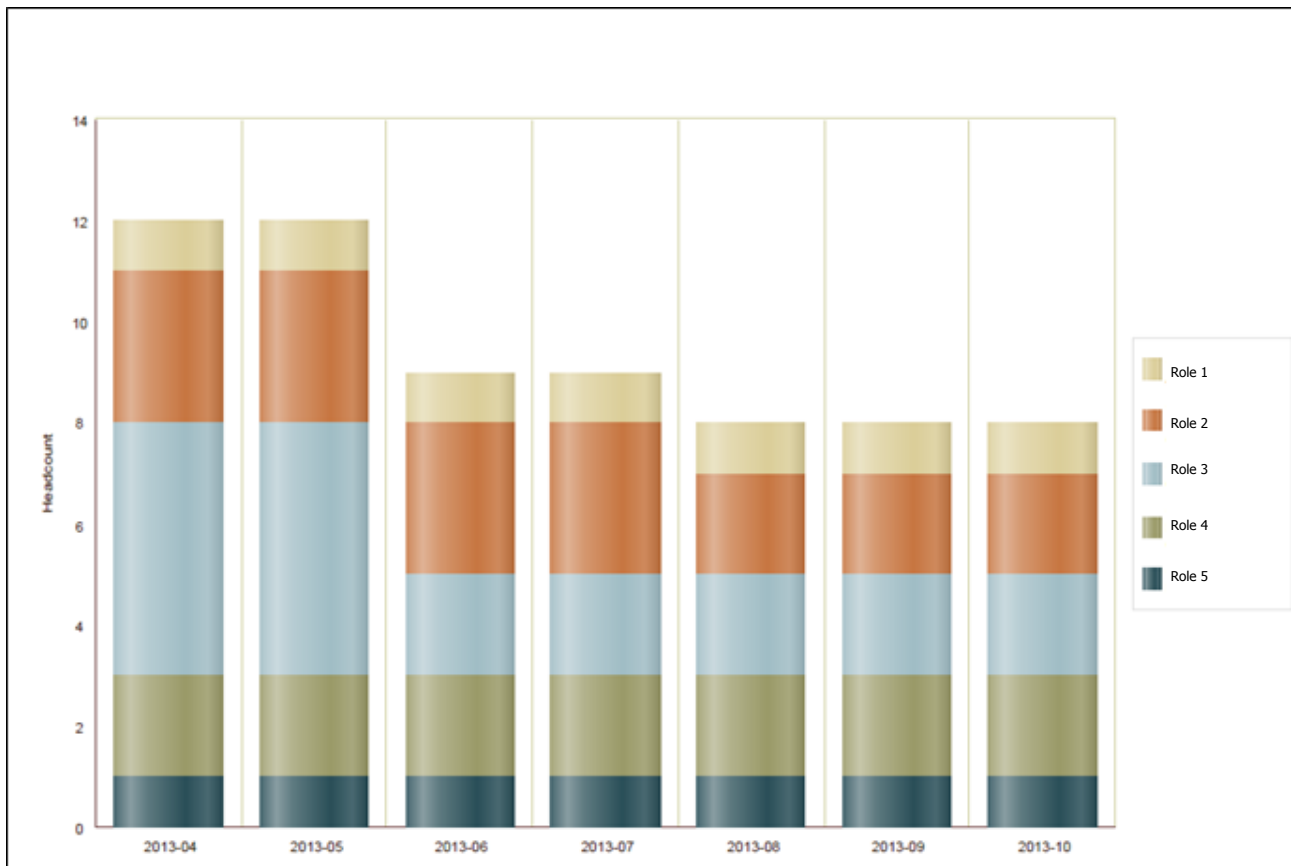
Report 4 (Project Type)

- Purpose: to show the gap between the available resources (=Supply) and the planned roles (=Demand) grouped by type of project



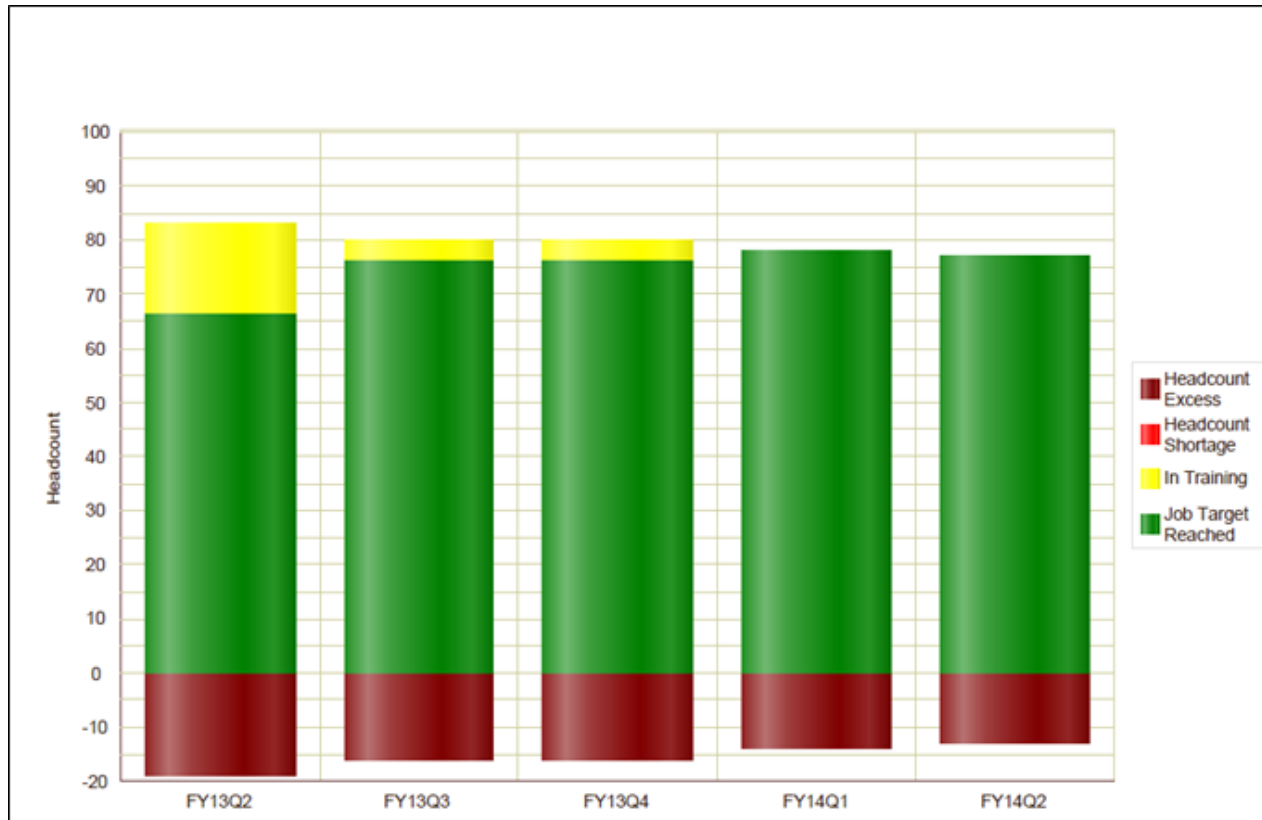
Report 6 (Headcount Unstaffed)

- Purpose: Headcount of resources which are needed for unstaffed role assignments grouped by role



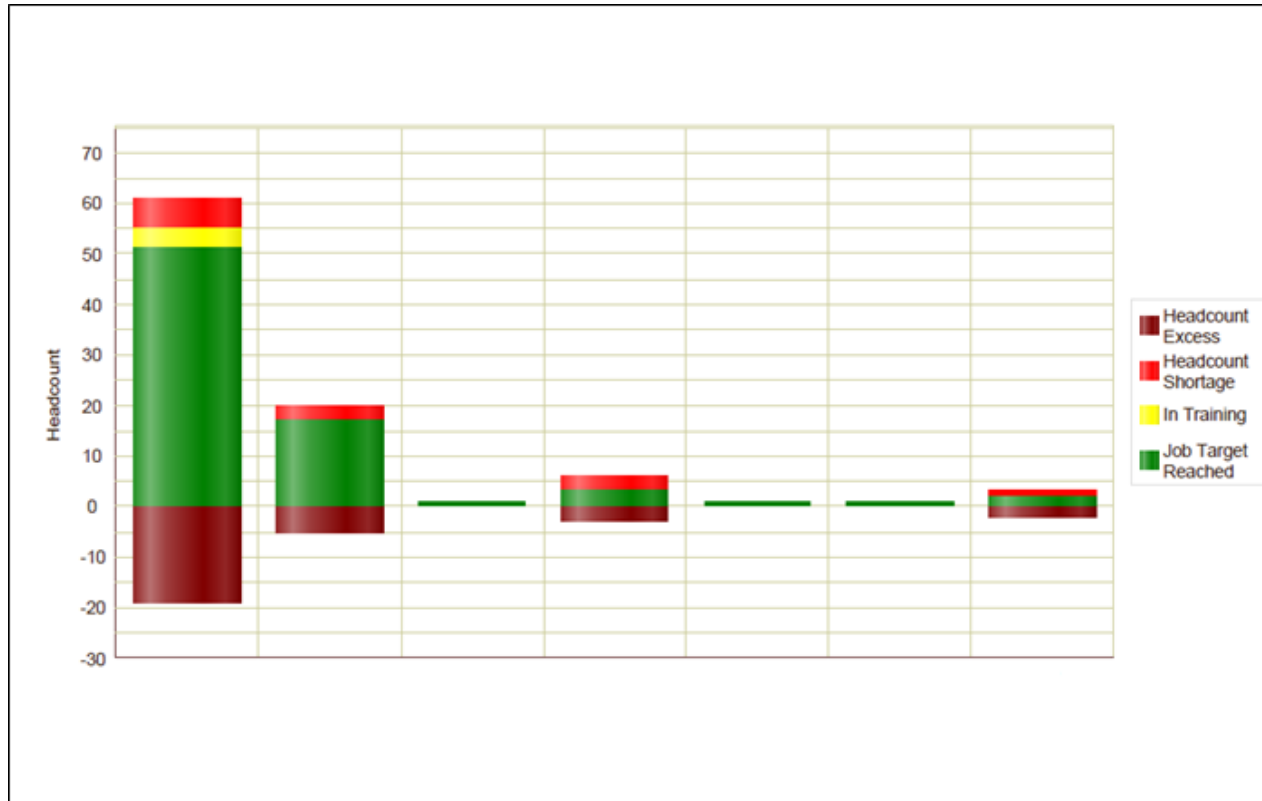
Report 7 (Headcount Target)

- Purpose: headcount of resources grouped by their status in relation to reaching their target role. Headcount shortage/excess shows if less/more resources are available than targeted for, based on roles.



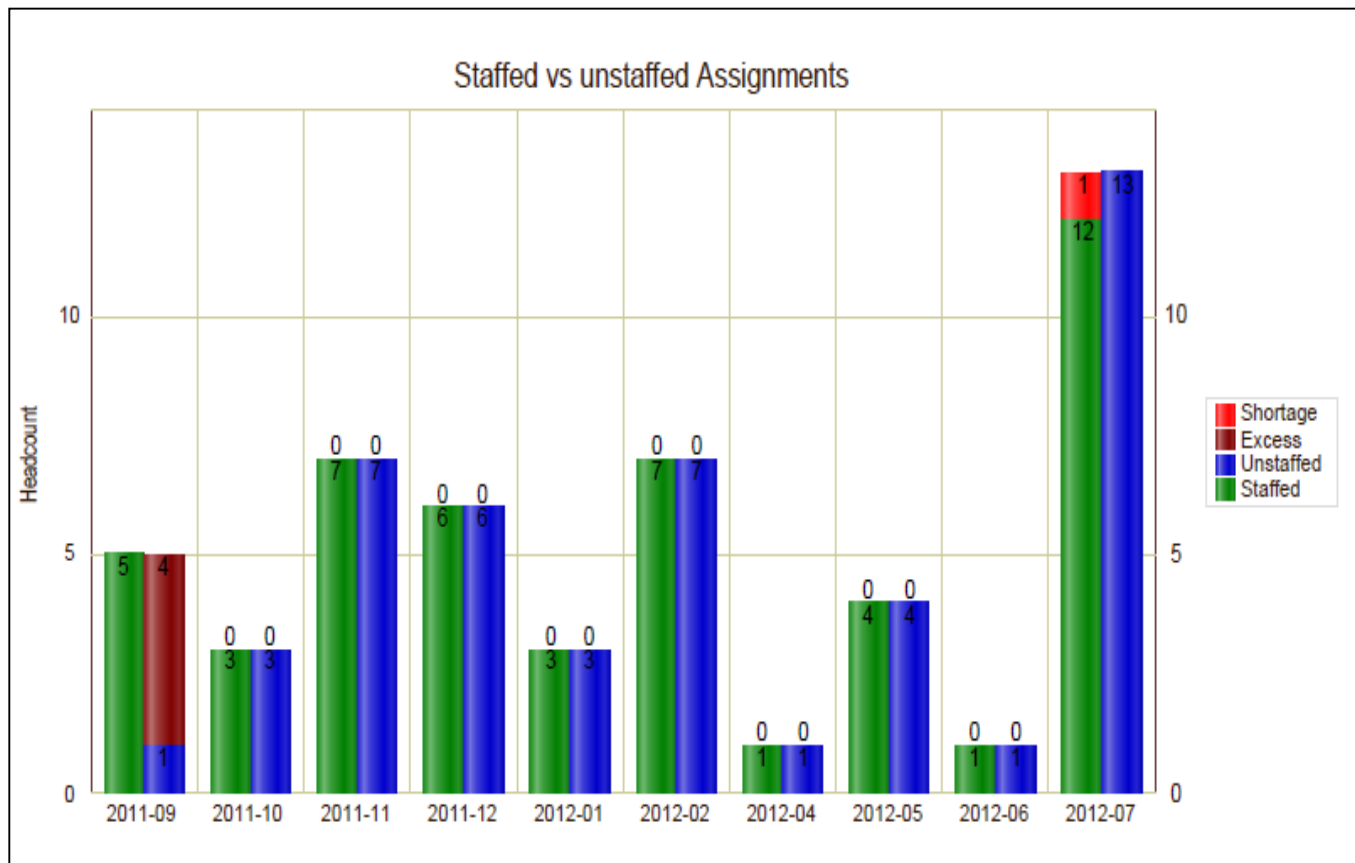
Report 8 (Headcount Target)

- Purpose: headcount of resources grouped by their status in relation to reaching their target role. Headcount shortage/excess shows if less/more resources are available than targeted for based on roles. Shown by role.



Staffed vs. Unstaffed Assignments

- Purpose: showing the difference between staffed and unstaffed assignments to evaluate shortages or excesses in resources.



Pivoted Actual Units per Project

- Purpose: tabellary overview of projects activities and assigned resources. Pivoted actuals give further details.

Project	Activity Name	Resource Id	Resource Name	Start	Budgeted Units	Actual Units	Remaining Units	DEZ	JAN
Order Management Redesign	Ensure link to continuous improvement	PetersonM	Michelle Peterson	2010-12-15 12:00PM	223 h	210 h	0 h	0 h	0 h
		Bpm001	BPM Consultant 1	2010-12-15 12:00PM	223 h	230 h	0 h	230 h	230 h
		JohnsonR	Rea Johnson	2010-12-15 12:00PM	112 h	110 h	0 h	110 h	110 h
		BillingsJ	Judy Billings	2010-12-15 12:00PM	223 h	210 h	0 h	210 h	210 h
		FrostB	Ben Frost	2010-12-15 12:00PM	223 h	223 h	0 h	223 h	223 h
		CooperP	Peter Cooper	2010-12-15 12:00PM	223 h	235 h	0 h	235 h	235 h
		Subtotal				1.227 h	1.218 h	0 h	Subtotal
	Identify enabling technologies *	JohnsonR	Rea Johnson	2010-07-16 00:00AM	35 h	40 h	0 h	40 h	40 h
		PetersonM	Michelle Peterson	2010-07-16 00:00AM	70 h	80 h	0 h	80 h	80 h
		BillingsJ	Judy Billings	2010-07-16 00:00AM	84 h	85 h	0 h	85 h	85 h
		Bpm002	BPM Consultant 2	2010-07-16 00:00AM	42 h	42 h	0 h	42 h	42 h
		CooperP	Peter Cooper	2010-07-16 00:00AM	42 h	49 h	0 h	49 h	49 h
		Subtotal				273 h	296 h	0 h	Subtotal
Total				1.550 h	1.514 h	0 h	Total	1.514 h 1.514 h	

Project WBS Overview

- Purpose: giving detailed informations about the chosen project and its WBS-Elements including their completion percentages and EV-Costs.

	Name	Budget at Completion	Activity % Complete	Performance % Complete	Earned Value Cost
	Enterprise City Center Office Building Addition	106.427€	15,42%	15,42%	23.751€
	Mechanical/Electrical Systems	61.832,00 €	0,00%	0,00%	2.915€
	Rough In Complete	0,00€	0,00%	0,00%	0€
	Rough-In Phase Begins	0,00€	0,00%	0,00%	0€
	HVAC	3.168,00€	92,00%	92,00%	2.915€
	Prepare and Solicit Bids for Heat Pump	3.168,00€	92,00%	92,00%	2.915€
	Elevator	6.048,00€	0,00%	0,00%	0€
	Install Elevator Cab and Finishes	4.032,00€	0,00%	0,00%	0€
	Install Elevator Rails and Equipment	2.016,00€	0,00%	0,00%	0€
	Plumbing and Electrical	52.616,00€	0,00%	0,00%	0€
	Set Mechanical and Electrical Equipment	17.280,00€	0,00%	0,00%	0€
	Rough-In Plumbing/Piping	7.976,00€	0,00%	0,00%	0€
	Install Wiring and Cable	27.360,00€	0,00%	0,00%	0€
	Exterior Finishes	44.595,20 €	44,00%	0,00%	0€
	Doors and Windows	3.859,20€	0,00%	0,00%	0€
	Install Exterior Doors and Windows	2.572,80€	0,00%	0,00%	0€
	Install Door and Window Frames	1.286,40€	0,00%	0,00%	0€
	Roof	7.520,00€	0,00%	0,00%	0€
	Insulation and Built-up Roofing	7.520,00€	0,00%	0,00%	0€
	Brick	33.216,00€	44,00%	44,00%	20.820€
	Award Contract for Brick	1.056,00€	8,00%	8,00%	84€
	Review Bids for Brick	3.168,00€	100,00%	100,00%	3.168€
	Brick Exterior Walls	11.424,00€	0,00%	0,00%	0€
	Review and Approve Brick Samples	14.400,00€	100,00%	100,00%	14.400€
	Prepare and Solicit Bids for Brick Exterior	3.168,00€	100,00%	100,00%	3.168€
	Summen/ Durchschnitt	106.427€	15,42%	15,42%	23.751€

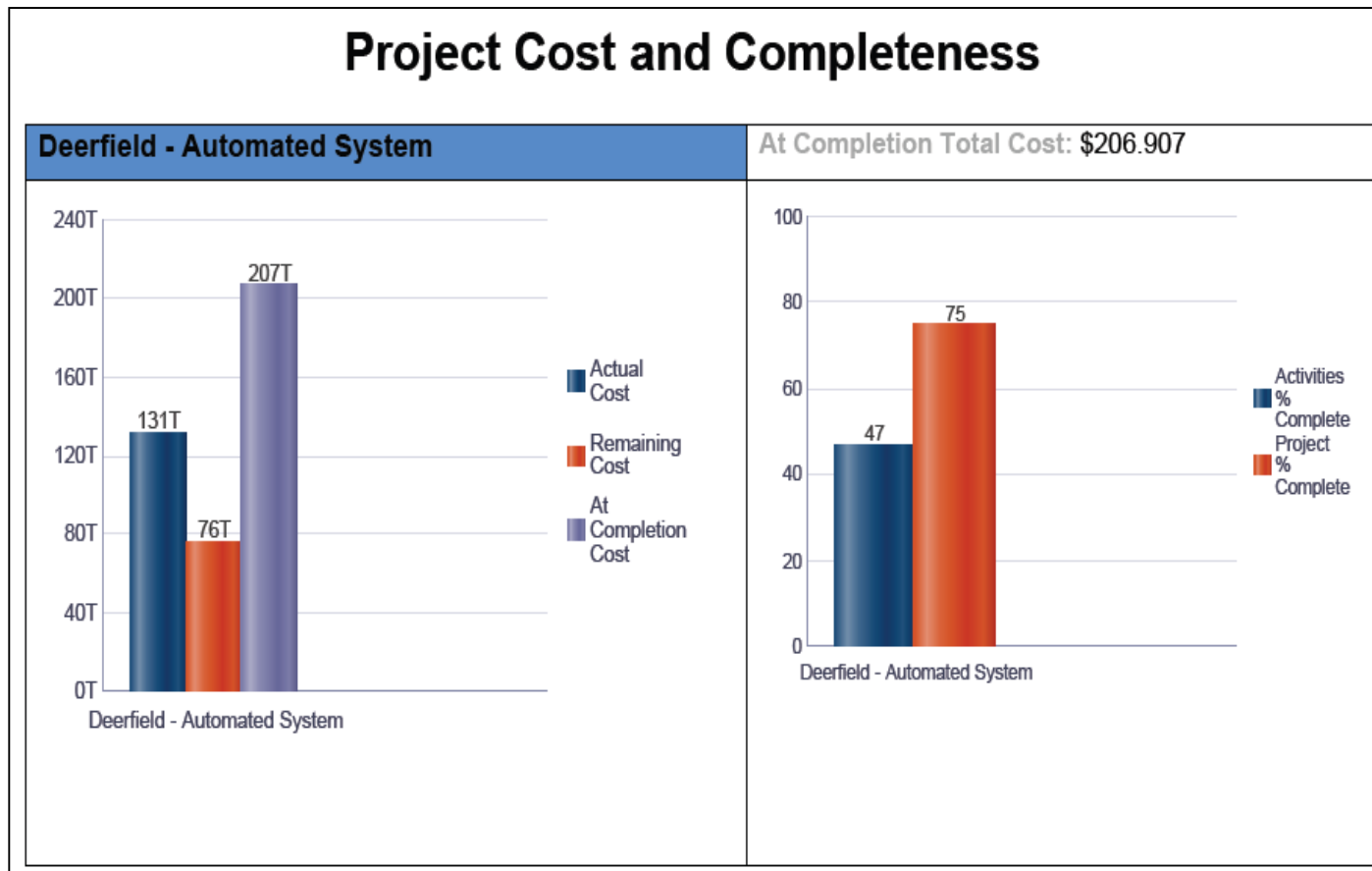
Project Status Report - 1

- Purpose: datasheet for chosen project includes general information as well as entries of projects notebook, risks, issues and milestones.

As of: 05/01/2011					
Project Status Report for: Deerfield - Automated System (MFG00659)					
SPONSOR Richards	BUSINESS SEGMENT 1006500	PROJECT MANAGER Jones	CURRENT PHASE Implementation	LOCATION North America	
DESCRIPTION Install automated system at Deerfield plant.					
START 12/01/2010	FINISH 08/17/2011	TARGET FINISH 08/02/2011	% COMPLETE 74.76%	ACTIVITIES COMPLETED 21 of 45	PROJECT SCORE 62
APPROVED BUDGET \$203.765	COST TO DATE \$131.265	AT COMPLETION \$206.907	COST VARIANCE -\$3.142	LABOR TO DATE 2098,6 h	LABOR VARIANCE -5,5 h
PRIORITY ISSUES 0 priority of 2 issues			OPEN RISKS 0 open of 3 risks		
NOTEBOOKS			MILESTONES		
Recent Accomplishments	Temperature control equipment is installed.				
Sponsor Feedback	I reviewed the design of the new automated system. I think this new design will save a lot of time.				
			Date	Status	
		Installation Begins	2/3/2011	Completed	
		Production Start	6/8/2011	Not Started	
		System Approved	8/2/2011	Not Started	

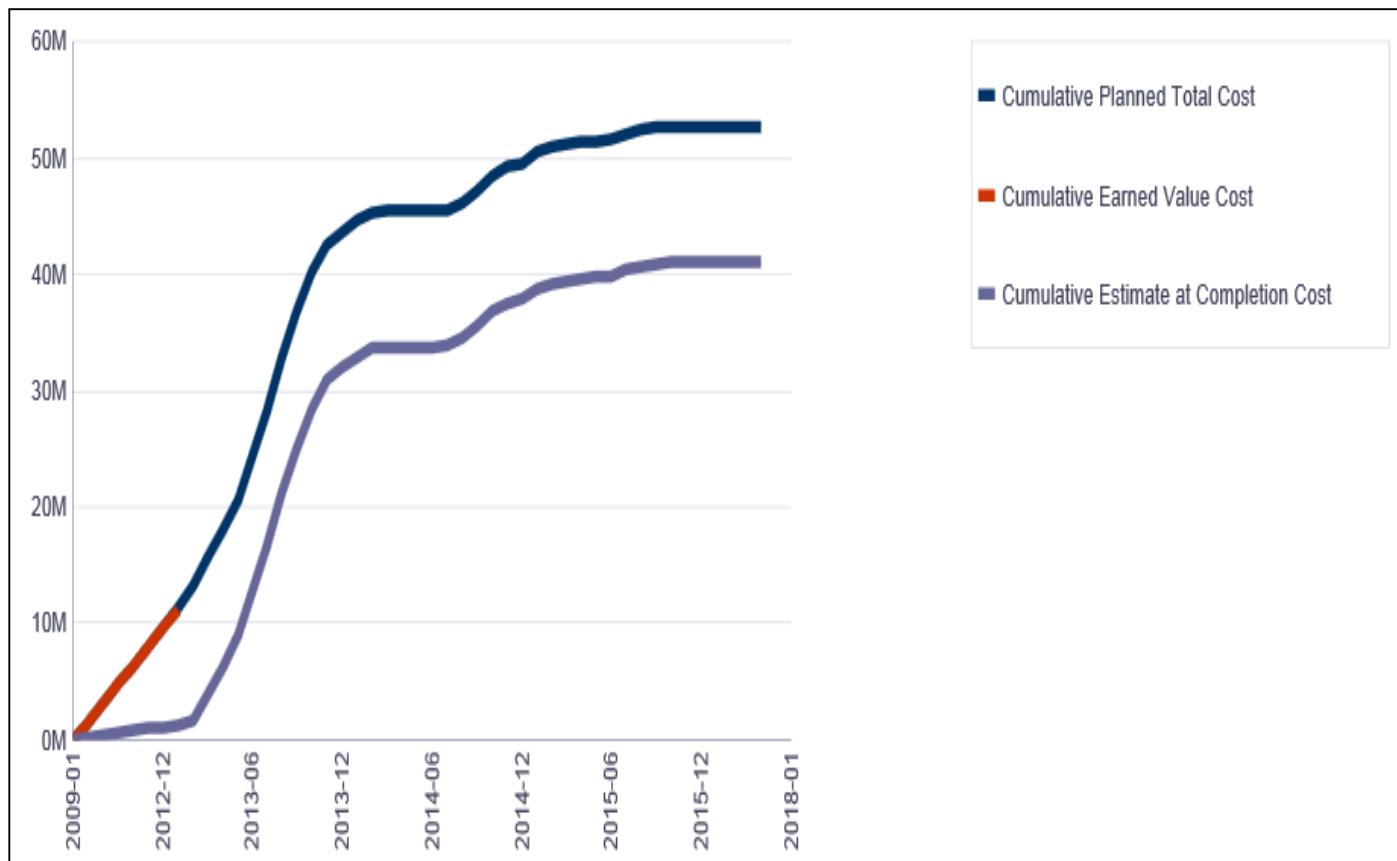
Project Status Report - 2

- Purpose: graphic representation of cost and completeness to complete the information given by the data sheet before.



S-Curves

- Purpose: s-curve displaying cumulated planned total, EV and estimate at completion cost for showing the project development over time.



Weekly Schedule Performance - 1

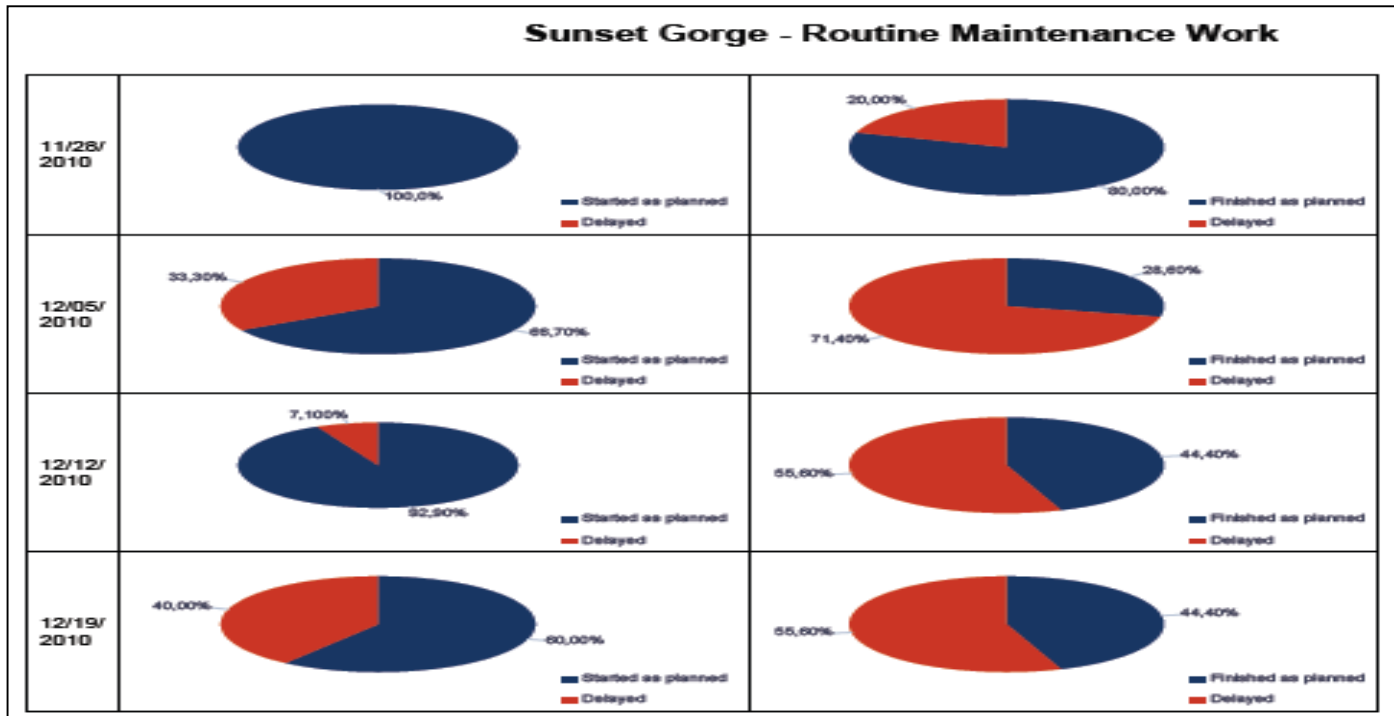
- Purpose: keeping track if the projects activites start and finish in time on a weekly base.

Weekly Schedule Performance												
Sunset Gorge - Routine Maintenance Work												
	Week of: 11/28/2010			Week of: 12/05/2010			Week of: 12/12/2010			Week of: 12/19/2010		
	Actual	Planned	%	Actual	Planned	%	Actual	Planned	%	Actual	Planned	%
Start	4	4	100	4	6	66.7	13	14	92.9	3	5	60
Finish	4	5	80	2	7	28.6	4	9	44.4	4	9	44.4

Weekly Schedule Performance - 2

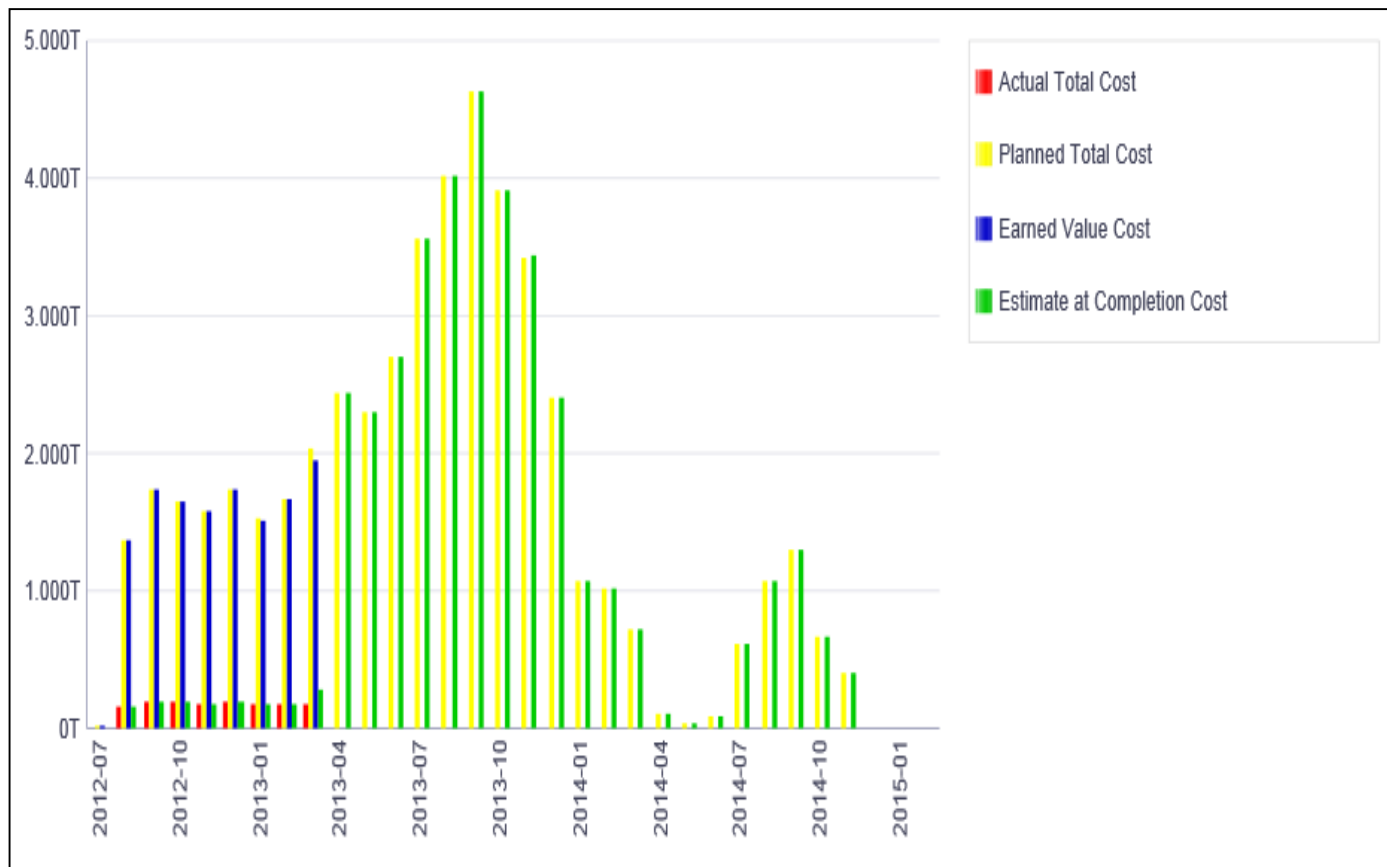
- Purpose: supporting the access to the information by displaying the projects performance in pie charts per week.

Started and finished activities



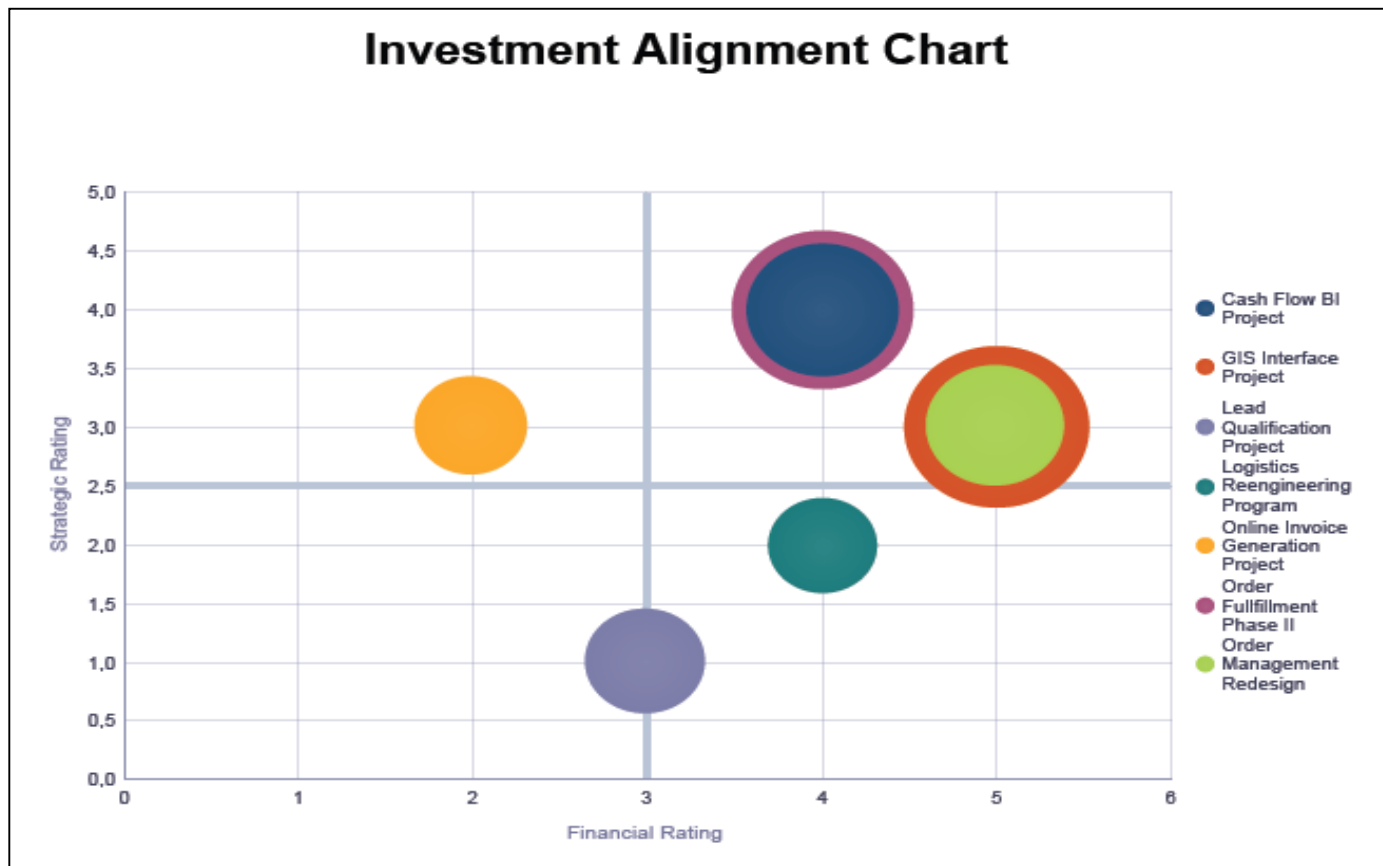
Project Earned Value

- Purpose: Displaying projects actual, planned, estimate at completion and EV-cost developing over time.



Investment Alignment

- Purpose: Comparing chosen project regarding their financial and strategic ranking for optimizing project portfolios.



Kontakt

proadvise GmbH

Brühlweg 4
73663 Berglen

Tel. +49 (0) 700 - 77 62 38 47 3
Fax +49 (0) 7195 - 970885

Email: info@proadvise.com
Web: www.proadvise.com

Ihr Ansprechpartner: Herr Andreas Kories

